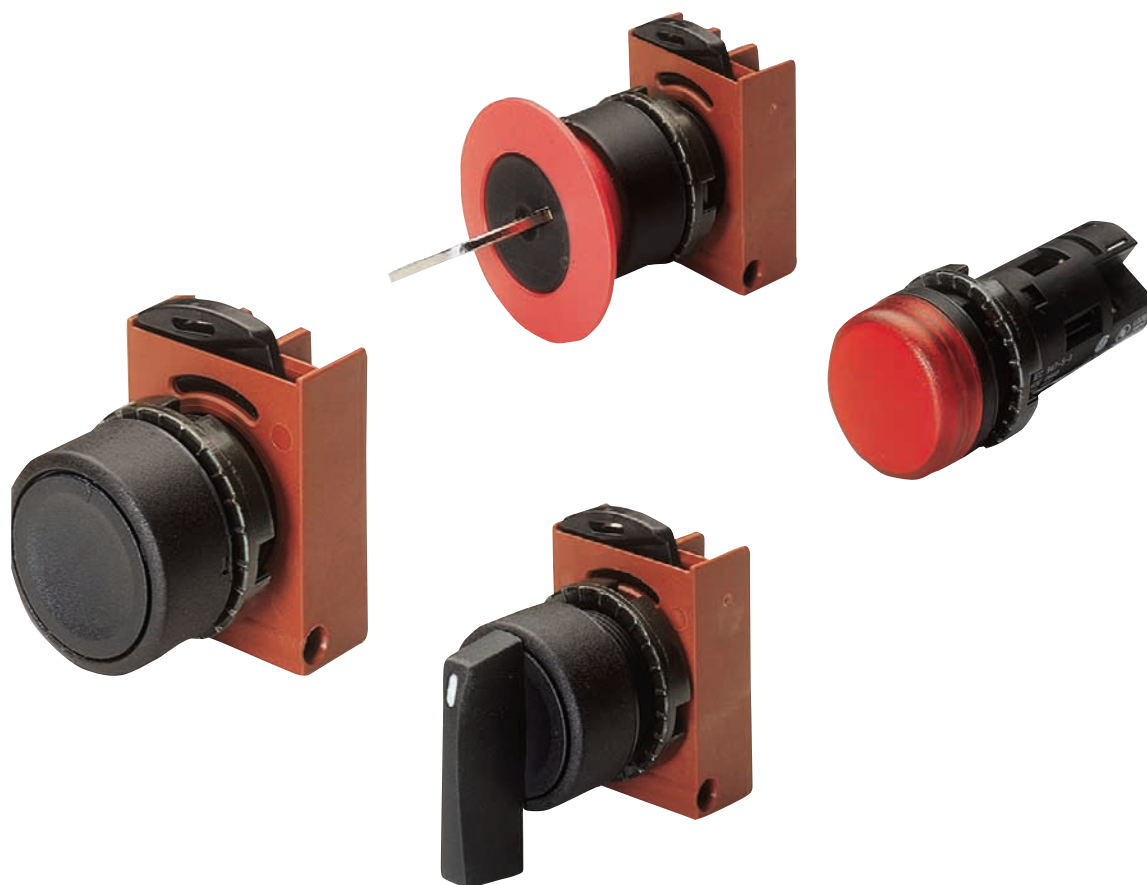


74 PS range

Push-buttons, selectors and indicators Ø 22mm

Push-buttons, selectors, indicators and 22mm diameter pre-drilled technopolymer enclosures. Ideal for the creation of signalling and control units meeting the most varied requirements in the industrial environment.

- Momentary and emergency push-buttons.
- 6 types of enclosures from 1 to 12 positions.
- Versions already equipped with push-buttons and contacts.
- ATEX-version box command devices.




74 PS RANGE

PUSH-BUTTONS, SELECTORS AND INDICATORS Ø 22 MM

Colour	MOMENTARY ROUND PUSH-BUTTONS		
	With guard	Without guard	With backlit guard
Green	GW 74 001	-	GW 74 041
Black	GW 74 002	GW 74 012	-
White	GW 74 003	-	GW 74 042
Red	GW 74 004	GW 74 011	-

Mushroom dim.	ROUND MUSHROOM-HEAD EMERGENCY PUSH-BUTTONS		
	With holding	With holding and key	Without holding
Ø40	GW 74 061	GW 74 062	GW 74 063

Positions	ROUND SELECTORS		
	Lever-type with fixed positions	Removable-key type with fixed positions	Lever type with return position
0 - 1	GW 74 101	GW 74 111	GW 74 121
1 - 0 - 2	GW 74 102	GW 74 112	GW 74 122

Colour	LUMINOUS INDICATORS	
	With direct supply	
Green	GW 74 151	
Red	GW 74 152	
Yellow	GW 74 153	
Light blue	GW 74 154	
White	GW 74 155	

Type	COMPLEMENTARY ITEMS	
	Contacts	5-seat flange
NO - Green	GW 74 201	GW 74 203
NC - Red	GW 74 202	

Indicator lights Ø 22	COMPLETE CONTAINERS			
	With guard	No. gangs	Contacts	Dimensions (LxHxD) mm
Generic (black)	GW 27 201	1	1 NO	66x82x65
Emergency (red)	GW 27 202	1	1 NO 1 NC	66x82x65
Start (green) Stop (red)	GW 27 203	2	1 NO 1 NC	132x82x65
Start (green) Stop (red) Signalling (white)	GW 27 204	3	1 NO 1 NC	66x171x65

No. gangs	EMPTY CONTAINERS			
	Code	Side entries	Top / Bottom entries	Dimensions (LxHxD) mm
1	GW 27 101	2 x Ø 23	2 x Ø 23	66x82x65
1	GW 27 111*	2 x Ø 23	2 x Ø 23	66x82x65
2	GW 27 102	6 x Ø 23	2 x Ø 23	132x82x65
3	GW 27 103	4 x Ø 23	2 x Ø 23	66x171x65
6	GW 27 104	4 x Ø 23	6 x Ø 23	132x171x65
12	GW 27 105	4 x Ø 23	6 x Ø 23	264x171x65

(*) GW 27 111: yellow lid and grey base - Specific for emergency push-buttons.

74 PS RANGE

74 PS RANGE

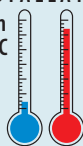
PUSH-BUTTONS, SELECTORS AND INDICATORS Ø 22 MM



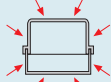
OPERATORS Ø 22 MM - IP66

INSTALLATION

min -15°C max +60°C



IP66



EN 60529

MOMENTARY PUSH-BUTTONS

GW74002



MOMENTARY PUSH-BUTTONS WITH ROUND GUARD

Code	Colour	Pack. Carton.
GW 74 001	Green	10/60
GW 74 002	Black	10/60
GW 74 003	White	10/60
GW 74 004	Red	10/60

APPLICATIONS: suitable for avoiding accidental activation, e.g. gates, tool machines, etc.
ACCESSORIES SUPPLIED: 3-seat flange (2 of which are contact-holders).

GW74011



MOMENTARY PUSH-BUTTONS WITHOUT ROUND GUARD

Code	Colour	Pack. Carton.
GW 74 011	Red	10/60
GW 74 012	Black	10/60

ACCESSORIES SUPPLIED: 3-seat flange (2 of which are contact-holders).

GW74041



MOMENTARY PUSH-BUTTONS WITH BACKLIT ROUND GUARD

Code	Colour	Pack. Carton.
GW 74 041	Green	10/60
GW 74 042	White	10/60

APPLICATIONS: ideal for also viewing the user operating status without using supplementary indicator lamps.
ACCESSORIES SUPPLIED: 2-seat contact-holding flange + 1 seat for lampholder GW74211.

EMERGENCY PUSH-BUTTONS

GW74062



ROUND MUSHROOM-HEAD EMERGENCY BUTTONS

Code	Functions	Description	Pack. Carton.
GW 74 061	With holding	Mushroom head Ø 40	5/60
GW 74 062	With holding and key	Mushroom head Ø 40	5/30
GW 74 063	Without holding	Mushroom head Ø 40	5/60

ACCESSORIES SUPPLIED: 3-seat flange (2 of which are contact-holders).
NOTES: all the keys are supplied with a standardised code.

74 PS RANGE

①=May 2010

②=June 2010

③=September 2010

74 PS RANGE

PUSH-BUTTONS, SELECTORS AND INDICATORS Ø 22 MM

SELECTORS

GW74101



ROUND LEVER SELECTOR WITH FIXED POSITIONS

Code	No. positions	Type	Pack. Carton.
GW 74 101	2	0 - 1	10/60
GW 74 102	3	1 - 0 - 2	10/60

CHARACTERISTICS: operator in thermoplastic material.

ACCESSORIES SUPPLIED: 3-seat flange (2 of which are contact-holders).

GW74111



KEY SELECTORS WITH FIXED POSITIONS AND REMOVABLE KEY ON POSITION -O- ROUND

Code	No. positions	Type	Pack. Carton.
GW 74 111	2	0 - 1	5/30
GW 74 112	3	1 - 0 - 2	5/30

CHARACTERISTICS: operator in thermoplastic material.

ACCESSORIES SUPPLIED: 3-seat flange (2 of which are contact-holders).

NOTES: all the keys are supplied with a standardised code.

GW74121



ROUND LEVER SELECTORS WITH -O- RETURN POSITION

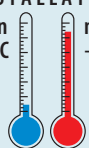
Code	No. positions	Type	Pack. Carton.
GW 74 121	2	0 - 1	10/60
GW 74 122	3	1 - 0 - 2	10/60

CHARACTERISTICS: operator in thermoplastic material.

ACCESSORIES SUPPLIED: 3-seat flange (2 of which are contact-holders).

INDICATORS - IP66

INSTALLATION
min -15°C max +60°C



IP66



EN 60529

74 PS RANGE

INDICATORS

GW74152



ROUND BACKLIT INDICATORS WITH DIRECT SUPPLY NOMINAL VOLTAGE 230 V - BA9S LAMP FIXING

Code	Colour	Pack. Carton.
GW 74 151	Green	10/60
GW 74 152	Red	10/60
GW 74 153	Yellow	10/60
GW 74 154	Light blue	10/60
GW 74 155	White	10/60

CHARACTERISTICS: bulb excluded. Max bulb power 2W.

NOTES: the colour of the diffuser is to be chosen in conformity with the colour code recommended by IEC 60073 standard.

Ⓛ=May 2010

Ⓜ=June 2010

Ⓢ=September 2010

74 PS RANGE

PUSH-BUTTONS, SELECTORS AND INDICATORS Ø 22 MM



COMPLEMENTARY ITEMS

GW74201

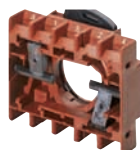


CONTACTS - ITH= 10A - 250V~

Code	Type	Category of use 240V ac15	Category of use 240V dc13	Colour	Pack. Carton.
GW 74 201	1 NO	3 A	0,27 A	Green	10/60
GW 74 202	1 NC	3 A	0,27 A	Red	10/60

CHARACTERISTICS: GW74202, suitable for opening the contact also in the event of it slightly sticking, in conformity with the EN 60947-5-1 standard.
Mounting on the contact flanges snaps into place. Contacts compatible with emergency control unit GW42201.

GW74203



5-SEAT FLANGE

Code	Description	Pack. Carton.
GW 74 203	Flange with 5 seats 4 of which are contact-holders	1/60

APPLICATIONS: in place of the 3-seat flange supplied with push-buttons and selectors, it increases the number of contacts that can be installed.

GW74211



BULB POWER SUPPLY - NOMINAL VOLTAGE 380 V - BA9S LAMP FIXING

Code	Power supply	Lamp power	Pack. Carton.
GW 74 211	Direct	2 W	10/60

CHARACTERISTICS: mounting on the contact flanges snaps into place.

APPLICATIONS: to be used with the backlit momentary push-buttons with guard to make functional indications.

GW74217



BULBS - BA9S LAMP FIXING

Code	Type	Rated voltage	Lamp power	Pack. Carton.
GW 74 216	Incandescent	30 V	2 W	5/100
GW 74 217	Incandescent	130 V	2 W	5/100
GW 74 218	Fluorescent	230 V	0.33 W	5/100

APPLICATIONS: the lamps are to be used with the luminous indicators or with the supply GW74211.

GW74221



BLACK SCREWCAP FOR UNWIRED ENCLOSURES FOR PUSH-BUTTONS WITH A ROUND SHAPE - Ø 22 MM

Code	Colour	Pack. Carton.
GW 74 221	Black	10/100

CHARACTERISTICS: thermoplastic screw cap.

GW74222



PLATES

Code	Dimensions (mm)	Suitable for	Colour	Text	Pack. Carton.
GW 74 222	30x40	Push-buttons Indicators Selectors	Black	-	5/100
GW 74 223	Ø 59	Mushroom-head emergency button	Yellow	Emergency-Stop	5/100

GW74223 to be used when the emergency push-buttons are installed on panel.

CHARACTERISTICS: the plates allow the function of push-buttons, selectors or indicators to be assigned.

GW74224



TOOL FOR MOUNTING RING NUTS

Code	Description	Pack. Carton.
GW 74 224	Tool for mounting ring nuts	1/50

GW74225



LAMP EXTRACTION TOOL

Code	Description	Pack. Carton.
GW 74 225	extraction tool Lamp	10/100

APPLICATIONS: suitable also for maintenance of ACS distribution board indicator lamps 68 Q-BOX range.

74 PS RANGE

①=May 2010

②=June 2010

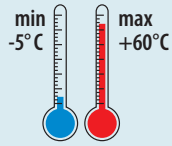
③=September 2010

74 PS RANGE

PUSH-BUTTONS, SELECTORS AND INDICATORS Ø 22 MM

COMBI 22 - INSULATING ENCLOSURES FOR OPERATORS AND INDICATORS - IP66

INSTALLATION



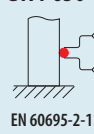
5 J



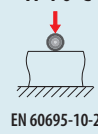
IP66



GWT 650°C



TP 70°C



ENCLOSURES

GW27101



UNWIRED ENCLOSURES FOR PUSH-BUTTONS, CONTROLS AND INDICATORS Ø 22 MM - GREY RAL 7035

Code	No. gangs	Side entries	Top entries	Bottom entries	Outer dim. LxHxD (mm)	Pack. Carton.
COLOUR: GREY RAL 7035						
GW 27 101	1	2 x Ø 23	1 x Ø 23	1 x Ø 23	66 x 82 x 65	5/60
GW 27 111	1	2 x Ø 23	1 x Ø 23	1 x Ø 23	66 x 82 x 65	5/60
GW 27 102	2	6 x Ø 23	1 x Ø 23	1 x Ø 23	132 x 82 x 65	2/30
GW 27 103	3	4 x Ø 23	1 x Ø 23	1 x Ø 23	66 x 171 x 65	1/20
GW 27 104	6	4 x Ø 23	3 x Ø 23	3 x Ø 23	132 x 171 x 65	1/10
GW 27 105	12	4 x Ø 23	3 x Ø 23	3 x Ø 23	264 x 171 x 65	1/10

CHARACTERISTICS: degree of protection ensured with IP66 operators correctly installed. Seat of hole with pre-cutting that allows the installation of operators with any reference. GW27111 with special yellow lid for the fitting of emergency push-buttons GW74061, GW74062, GW74063.

COMPLETE ENCLOSURES

GW27202



COMPLETE ENCLOSURES - GREY RAL 7035

Code	No. gangs	Contacts	Operators Ø 22	Outer dim. LxHxD (mm)	Pack. Carton.
GW 27 201	1	1 NO	General (black)	66 x 82 x 65	1/30
GW 27 202	1	1 NO 1 NC	Emergency (red)	66 x 82 x 65	1/30
GW 27 203	2	1 NO 1 NC	Start (green) Stop (red)	132 x 82 x 65	1/10
GW 27 204	3	1 NO 1 NC	Start, stop, indicator	66 x 171 x 65	1/10

CHARACTERISTICS: contact flange with 3 seats. Maximum protrusion of operator from the enclosure: GW27201, GW20203, GW27204 - 20 mm
GW27202 - 25 mm. GW27202, yellow lid, mushroom-head button with detent; GW27204, direct supply, BA9S coupling included max 380 V - 2 W, bulb excluded. Completed insulation according to IEC 536.

COMPLEMENTARY ITEMS

GW27402



JUNCTION BOX FOR COMBINED ASSEMBLY OF MODULAR CONTAINERS - GREY RAL 7035 - IP55

Code	No. knockout holes Ø23	Lid screws (no. and type)	Outer dim. LxHxD (mm)	Pack. Carton.
GW 27 402	8 on sides / 1 on the bottom	4 - Stainless steel	132 x 82 x 55	2/60

Complete insulation can be achieved with the use of GW44622 screwcaps.

GW26406



WATERPROOF COUPLER FOR ENCLOSURES, DEVICES AND BOXES - IP55

Code	For holes mounting Ø (mm)	For mounting PG holes	Pack. Carton.
GW 26 406	23	16	25/250

GW44622



INSULATING SCREW CAP

Code	Description	Pack. Carton.
GW 44 622	Screwcap Ø16mm	10/100

APPLICATIONS: used to restore the double insulation and the original IP degree of protection of the boxes, containers and other GEWISS products.

GW74201



CONTACTS - ITH = 10A - 250V~

Code	Type	Category of use 240V ac15	Category of use 240V dc13	Colour	Pack. Carton.
GW 74 201	1 NO	3 A	0,27 A	Green	10/60
GW 74 202	1 NC	3 A	0,27 A	Red	10/60

CHARACTERISTICS: GW74202 suitable for contact opening also in the event of slight sticking, in compliance with Standard EN 60947-5-1. Clip assembly on the contact-holder flanges. Contacts compatible with emergency enclosure GW42201.

Ⓜ=May 2010

Ⓜ=June 2010

Ⓜ=September 2010

74 PS RANGE

PUSH-BUTTONS, SELECTORS AND INDICATORS Ø 22 MM



74 ATEX - COMMAND EQUIPMENT IN BOX - ZONE 22 (D)

FOR EMERGENCY

GW74232



EMERGENCY MUSHROOM PUSH-BUTTON IN ALUMINIUM BOX - GREY RAL 7037

Code	Type	Contacts	Pack. Carton.
GW 74 232	Red mushroom-head + hold	1 NC	1

CHARACTERISTICS: yellow label with "Emergency - Stop" inscription.

ACCESSORIES SUPPLIED: 1 ATEX M20 brass cable gland.

ATEX VERSIONS CLASSIFICATION: Ex tD A22 IP66 T85°C X

FOR OPERATING/STOPPING

GW74233



RUN/STOP PUSH-BUTTONS IN ALUMINIUM BOX - GREY RAL 7037

Code	Type	Contacts	Pack. Carton.
GW 74 233	Green Red with guard	Green NO and red NC	1

CHARACTERISTICS: NC contact suitable for opening also in the case of slight sticking, in compliance with standard EN 60947-5 -1.

Push-buttons protected with transparent silicone cap.

ACCESSORIES SUPPLIED: 1 ATEX M20 brass cable gland.

ATEX VERSIONS CLASSIFICATION: Ex tD A22 IP66 T85°C X

74 PS RANGE

①=May 2010

②=June 2010

③=September 2010